



MONTHLY MEMBERSHIP PROGRESS REPORT

District 324B3

Results as of: 03/31/2018

GMT: N S SANKAR

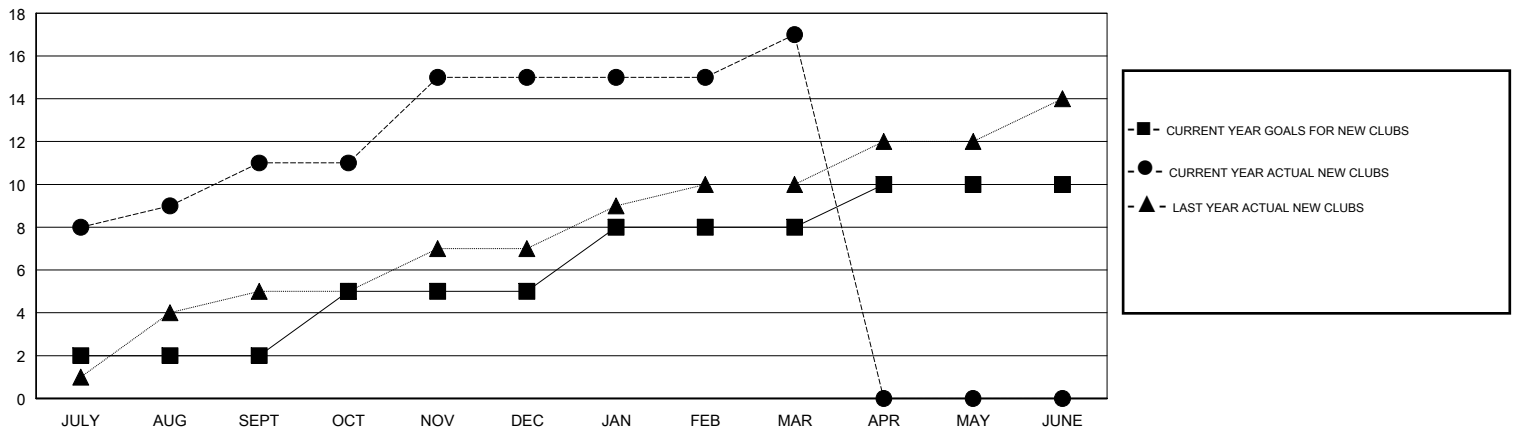
LOCATION INDIA

GMT CA

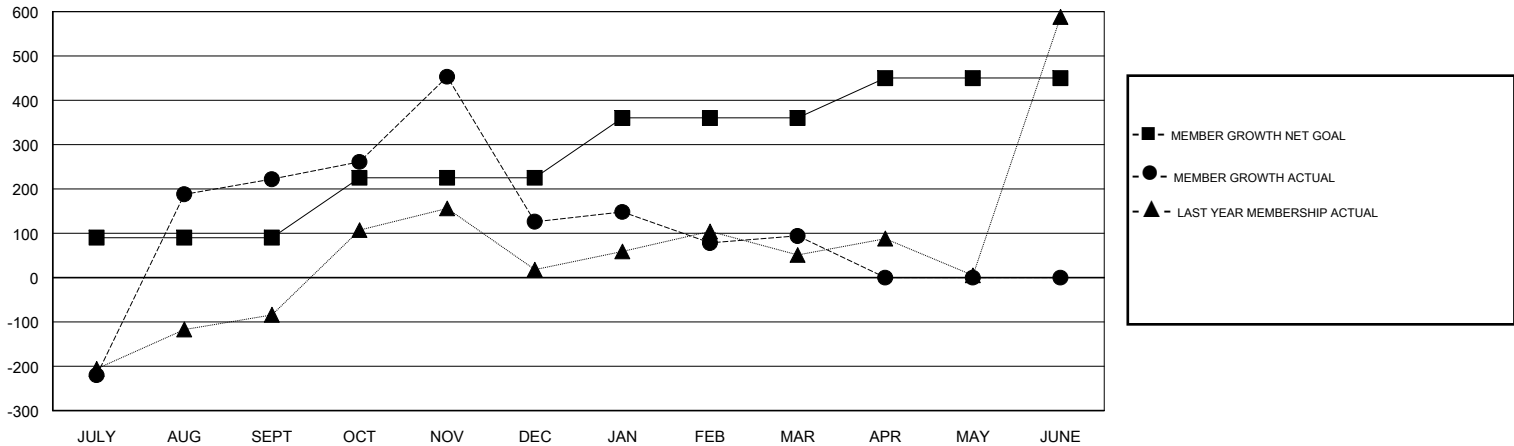
Clubs			
RESULTS FOR 2017-2018			
QUARTER	NEW CLUB GOAL	NEW CLUBS	DROPPED CLUBS
JULY/AUG/SEPT	2	11	0
OCT/NOV/DEC	3	4	9
JAN/FEB/MAR	3	2	3
APR/MAY/JUNE	2	0	0

Members			
RESULTS FOR 2017-2018			
QUARTER	MEMBER GROWTH NET GOAL	MEMBER GROWTH ACTUAL	DROPPED MEMBERS ACTUAL (including transfers)
JULY/AUG/SEPT	90	885	586
OCT/NOV/DEC	135	364	389
JAN/FEB/MAR	135	408	275
APR/MAY/JUNE	90	0	0

GOALS AND ACTUAL NEW CLUBS CUMULATIVE



GOALS AND ACTUAL MEMBERS CUMULATIVE



DROPPED CLUBS: 12	147 CLUBS OF 179 ADDED 1 OR MORE NEW MEMBERS	<u>GENDER DISTRIBUTION</u> MALE 5,661 (77.27%) FEMALE 1,665 (22.73%) Women Percentage Fiscal Year Goal: 10%
<u>DROPPED MEMBERS</u> DECEASED 22 CLUB CANCELLED 345 OTHER 883 TOTAL 1,250	CLICK HERE FOR CUMULATIVE MEMBERSHIP DATA	TOTAL FAMILY UNIT MEMBERS 3,381 FAMILY MEMBERS PAYING HALF DUES 1,932